

Environmental Chemical Solutions

StoreCare Program

Application Guide for Cleaning and Degreasing
Using

GoldCrew[®] P₂



INTRODUCTION

Cleaning has never been more environmentally correct, economical or effective.

GoldCrew® P₂ is a member of the StoreCare family of cleaning products. P₂ is the cleaner of choice for everyday soft drink syrup spills, the convenience store forecourt, pad, dispensers and islands. P₂ offers the additional benefit of superior odor control for gas and oil laden entry mats and garbage collection areas. P₂ will even stop hydrocarbon attack on asphalt.

Unlike traditional high caustic cleaning products, P₂ will not damage decals or painted surfaces and is nonirritating to the skin. P₂ meets USDA requirements for use in inspected meat plants and food service areas. P₂ is exempt from OSHA & EPA special handling and personal protection requirements for hazardous materials.

- Important Note -

Before mixing and during application, always wear Personal Protective Equipment: safety goggles and chemical resistant gloves.

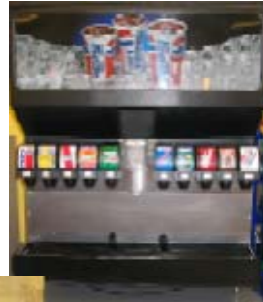
Applications

Forecourt: Dispensers, Nozzles and Housings, Signage, Soft Drink Spills, Garbage Receptacles and All General Cleaning.

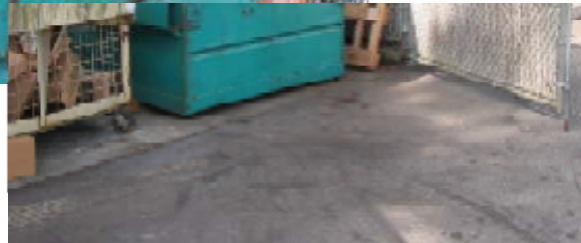


Applications

Store: Food Service Areas, Soda Fountain and Drip Tray Drains, Soft Drink Spills, Syrup Rack Area, Carpet Odor Control, Floors, Counter Tops and Shelving.



Garbage Collection Area: General Cleaning and Odor Control, Walls and Pad in Dumpster Containment Area.



Mixing Instructions

Quart Bottles

Using the one gallon P₂ pump, put one complete pump stroke of **P₂ Cleaner Degreaser Concentrate** into the quart bottle. Slowly fill the bottle with water to make working solution.

Larger Quantities

Add 1 part **P₂ Cleaner & Degreaser Concentrate** to 32 parts water.



Environmental Chemical Solutions

Copyright 2005- All Rights Reserved
P.O. Box 2029 Gig Harbor, Washington 98335
Toll Free: 1.877.253.2665

www.ecschem.com

PGMECS:P2